

Rekstur í skýjunum

Hádegisverður Ský maí 2017

Microsoft
Partner



Gold Small and Midmarket Cloud Solutions
Gold Cloud Productivity
Gold Communications
Gold Hosting



Compute
Networking
Storage
Web + Mobile
Containers
Databases
Data + Analytics
AI + Cognitive Services
Internet of Things
Enterprise Integration
Security + Identity
Developer Tools
Monitoring + Management
Microsoft Azure Stack

500 million

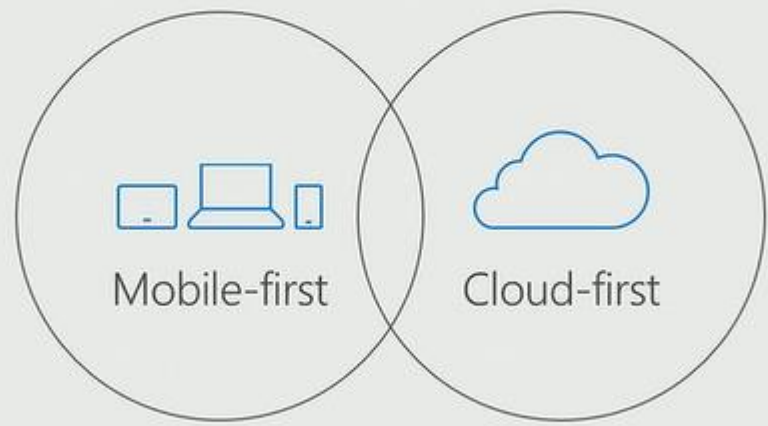
Windows 10 monthly
active devices

100 million

commercial Office 365
monthly active users

>140 million

Cortana monthly
active users



12 million

organizations in
Azure Active Directory

>90%

Fortune 500 using
Microsoft Cloud



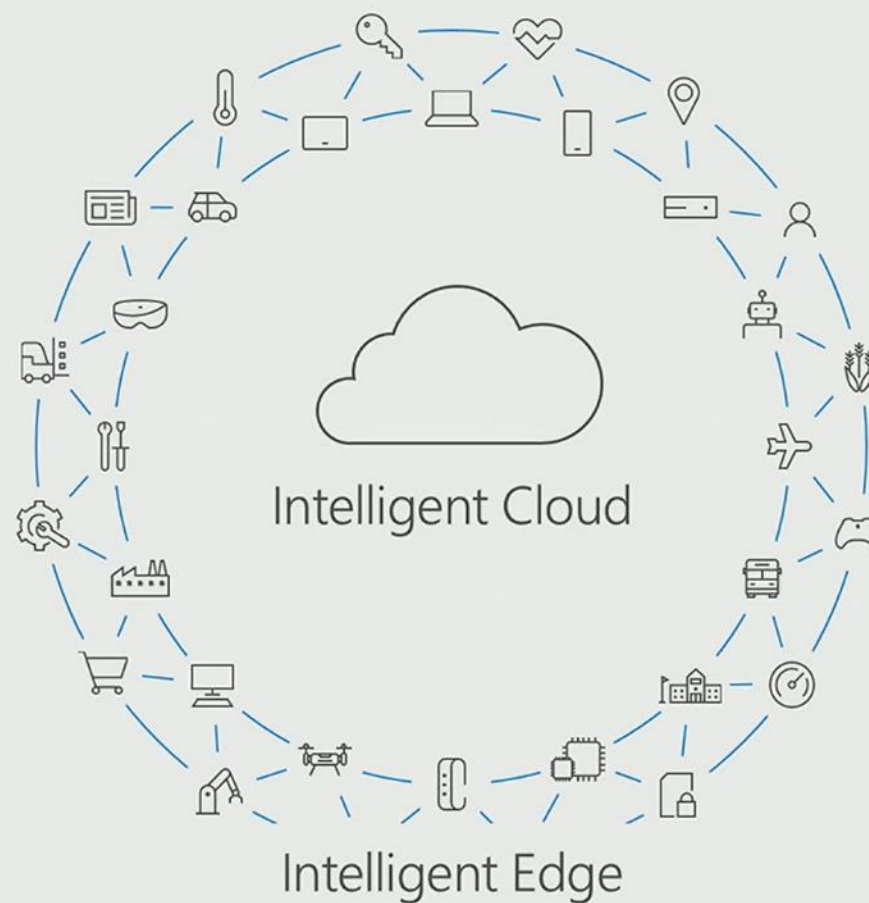
Multi-device

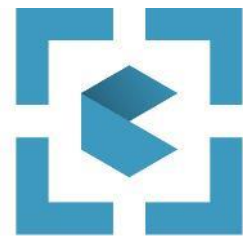
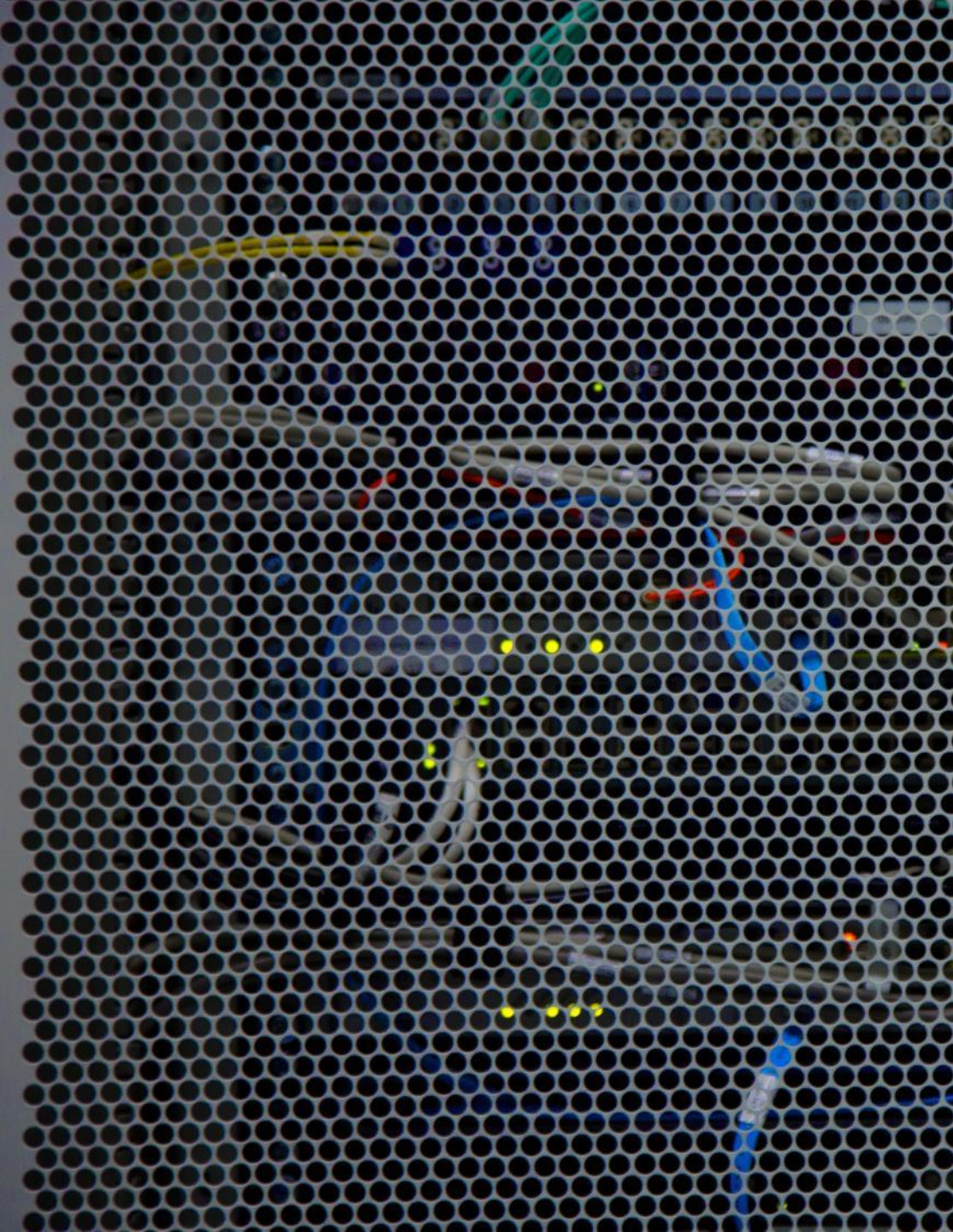


Artificial
Intelligence



Serverless





Stýringar
Eftirlit
Mat
Öryggi



Dev. Test Labs



Scheduler



Sniðmát #1



Sniðmát #2



Sniðmát #3



DC1



ADFS1



S4B



Exchange



DC2



ADFS2



S4B Edge



Proxy



Resource



Users



DMZ



Lokað VPN



Tillaga að þróunar umhverfi
5.5.2017





Opin Kerfi
– allt er mögulegt

Euro	114
Tímar á mánuði	744
Tími í notkun	100%

Hlutverk	Vörur/lýsing	Core	Minni	Disk	Type	Einingaverð	Eining	Tím pr. mán	Samtala €
DC1	A1 - Sýndarvél	1	1,75	40	HDD	21,34 €	Mán	744 klst	21,34 €
DC2	A1 - Sýndarvél	1	1,75	40	HDD	21,34 €	Mán	744 klst	21,34 €
ADFS1	A1 - Sýndarvél	1	1,75	40	HDD	21,34 €	Mán	744 klst	21,34 €
ADFS2	A1 - Sýndarvél	1	1,75	40	HDD	21,34 €	Mán	744 klst	21,34 €
Proxy	A2 v2 - Sýndarvél	2	4	20	SSD	81,57 €	Mán	744 klst	81,57 €
Skype Edge	A2 v2 - Sýndarvél	2	4	20	SSD	81,57 €	Mán	744 klst	81,57 €
Exchange	A4 v2 - Sýndarvél	4	8	40	SSD	171,92 €	Mán	744 klst	171,92 €
S4B	A4 v2 - Sýndarvél	4	8	40	SSD	171,92 €	Mán	744 klst	171,92 €
VNet Peering	Gögn á milli neta					0,009 €	pr. GB	500 GB	4,50 €
VPN tenging	Basic 100mbit max					22,590 €	Mán	744 klst	22,59 €
Outbound Inter-VNET	Zone 1					0,030 €	GB	500 GB	14,80 €
Gögn samantekið	HDD LRS Hot					0,020 €	GB	1000 GB	20,20 €
Heild pr. mán									654,4 €
ISK án/VSK									74.605 ISK
ISK með/VSK									92.510 ISK





Opin Kerfi
– allt er mögulegt

Euro	114
Tímar á mánuði	223,2
Tími í notkun	30%

Hlutverk	Vörur/lýsing	Core	Minni	Disk	Type	Einingaverð	Eining	Tím pr. mán		Samtala €
DC1	A1 - Síndarvél	1	1,75	40	HDD	21,34 €	Mán	223,2	klst	6,40 €
DC2	A1 - Síndarvél	1	1,75	40	HDD	21,34 €	Mán	223,2	klst	6,40 €
ADFS1	A1 - Síndarvél	1	1,75	40	HDD	21,34 €	Mán	223,2	klst	6,40 €
ADFS2	A1 - Síndarvél	1	1,75	40	HDD	21,34 €	Mán	223,2	klst	6,40 €
Proxy	A2 v2 - Síndarvél	2	4	20	SSD	81,57 €	Mán	223,2	klst	24,47 €
Skype Edge	A2 v2 - Síndarvél	2	4	20	SSD	81,57 €	Mán	223,2	klst	24,47 €
Exchange	A4 v2 - Síndarvél	4	8	40	SSD	171,92 €	Mán	223,2	klst	51,58 €
S4B	A4 v2 - Síndarvél	4	8	40	SSD	171,92 €	Mán	223,2	klst	51,58 €
VNet Peering	Gögn á milli neta					0,009 €	pr. GB	500	GB	4,50 €
VPN tenging	Basic 100mbit max					22,590 €	Mán	744	klst	6,78 €
Outbound Inter-VNET	Zone 1					0,030 €	GB	500	GB	14,80 €
Gögn samantekið	HDD LRS Hot					0,020 €	GB	1000	GB	20,20 €
Heild pr. mán										224,0 €
ISK án/VSK										25.534 ISK
ISK með/VSK										31.662 ISK



OMS lausnirnar

Solutions Gallery

Solution offers

Insight & Analytics

Microsoft

- Monitor and Troubleshoot Application and Infrastructure issues using Log Analytics.
- Includes 2 solutions

Automation & Control

Microsoft

- Increase control with automation and configuration management
- Includes 2 solutions

Security & Compliance

Microsoft

- Secure and audit your datacenter with full visibility to all security data and with advanced threat detection
- Includes 2 solutions

Protection & Recovery

Microsoft

- Ensure data protection with cloud backup and disaster recovery
- Includes 2 solutions

All solutions



Azure SQL Analytics (Preview) NEW

Available
Azure SQL Database and Elastic Pool Monitoring and Performance Analytics



Alert Management

Available
View your Operations Manager and OMS alerts to easily triage alerts and identify the root causes of problems in your



Activity Log Analytics

Available
Track all create, update and delete activities occurring in your Azure subscriptions.



Automation Hybrid Worker

Available
Create Hybrid Runbook Workers to run Automation runbooks on your on-premises servers.



Capacity and Performance (Preview)

Available
Gain visibility into your Hyper-V environment's CPU, memory, and storage



Containers

Available
See Docker container performance metrics and logs from containers across your public or private cloud environments.



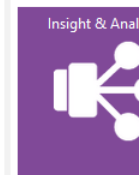
Key Vault Analytics (Preview)

Available
Understand your Key Vault usage through Analysis of Key Vault logs



Office 365 Analytics (Preview)

Available
Get full visibility into your Office 365 user activities, perform forensics as well as audit and compliance.



Service Map (Preview)

Available
Automatically discover map servers and their dependencies in re



Azure Web Apps Analytics (Preview) NEW

Available
Identify and troubleshoot issues across your Azure Web Apps



Application Insights Connector (Preview)

Available
Improve your visibility across applications



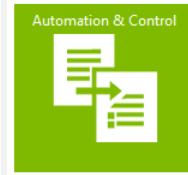
Azure Application Gateway Analytics (Preview)

Available
Gain insight into your Azure Application Gateway logs



Azure Network Security Group Analytics (Preview)

Available
Gain insight into your Azure Network Security Group logs



Change Tracking

Available
Track configuration changes across your servers



HDInsight HBase Monitoring (Preview)

Available
HDInsight HBase Log Analytics, Monitoring & Alerting



Network Performance Monitor (Preview)

Available
Offers near real time monitoring of network performance parameters like loss and latency.



Service Fabric Analytics

Available
Identify and troubleshoot issues across your Service Fabric cluster



SQL Assessment

Available
Assess the risk and SQL Server environ

Exception Properties - MicroRecommendations - MiX

portal.azure.com/?feature.customportal=false&Microsoft_Azure_Security_Jit=true&Microsoft_Azure_Security_R3_Jit=true&Microsoft_Azure_Security_R3_AppWhitelisting=true#blade/Microsoft_Azure_Security/SecurityMenuBlade/0

Microsoft AzureSecurity Center - OverviewRecommendations

Search resources

modernclouddemo2...MICROSOFT

Security Center - Overview

Power BISubscriptionsLog Integration

Overview

Recommendations21 Total

Partner solutions2 Healthy

New alerts & incidents00

Policy

Quickstart

Prevention

Compute22 Total

Networking16 Total

Storage & data36 Total

Applications4 Total

Detection

Security alerts

6

4

2

0

23 Sun30 Sun7 Sun

HIGH SEVERITY6

MEDIUM SEVERITY5

LOW SEVERITY9

Most attacked resources

vm110 Alerts

vm36 Alerts

vm44 Alerts

Advanced cloud defense

Just in time VM access - last week

3

2

1

0

7 Sun7 Sun8 Mon8 Mon9 Tue

PROTECTED5 VMs

APPROVED REQUESTS5 Total

Application whitelisting

3 of 8 VMs configured

Violations Audited1 VMs

Violated rules - changed manually1 VMs

Filter


DESCRIPTION	RESOURCE	STATE	SEVERITY
Enable VM Agent	2 virtual mac...	Open	High
Install Endpoint Protection	10 virtual ma...	Open	High
Add a web application firewall	4 web applic...	Open	High
Add a Next Generation Firewall	9 endpoints	Open	High
Finalize Internet facing endpoint protec...	VM3-RDP-M...	Open	High
Enable Network Security Groups on sub...	6 subnets	Open	High
Enable Network Security Groups on virt...	2 virtual mac...	Open	High
Route traffic through NGFW only	vm3	Open	High
Enable Auditing & Threat detection on...	2 SQL Servers	Open	High
Remediate vulnerabilities (by Qualys)	2 virtual mac...	Open	High
Enable Auditing & Threat detection on...	4 SQL datab...	Open	High
Apply a Just-In-Time network access co...	7 virtual mac...	Open	High
Apply system updates	9 virtual mac...	Open	High
Apply disk encryption	18 virtual ma...	Open	High
Enable encryption for Azure Storage Ac...	25 storage a...	Open	High
Restrict access through Internet facing...	9 virtual mac...	Open	Medium
Add a vulnerability assessment solution	11 virtual ma...	Open	Medium
Enable Transparent Data Encryption	6 SQL datab...	Open	Medium
Reboot after system updates	vm2	Open	Medium
Provide security contact details	1 subscriptions	Open	Medium
Remediate OS vulnerabilities (by Micros...	8 virtual mac...	Open	Low

SQL Server Assessment

Microsoft Operations Management Suite


Overview ▶ SQL Assessment ▶ SQL Focus Area

AVAILABILITY AND BUSINESS CONTINUITY



66%

- HIGH PRIORITY RECOMMENDATIONS: 11
- LOW PRIORITY RECOMMENDATIONS: 2
- PASSED CHECKS: 25



Keep your services available and your business profitable by ensuring the resiliency of your infrastructure and by having the right level of business protection in the event of a disaster.

[See all...](#)

PRIORITIZED RECOMMENDATIONS

Schedule full database backups at least weekly. 4.0

One or more databases have not had a full backup in the last seven days. Should you need to restore a database restoring multiple incremental backups over an old full backup will increase the total recovery time.

Optimize your backup strategy with Microsoft Azure Blob Storage. 3.9

A robust backup strategy is a key part of a comprehensive disaster recovery solution. Your version of SQL Server supports direct backups to Azure Blob Storage. This offers many advantages over other approaches to backup including geographically-replicated off-site storage immediate access to backup media and ease of data migration to and from the cloud.

Investigate and resolve problems performing write operations due to insufficient disk space. 3.9

SQL Server could not allocate a new page to write an object to a database because there are no more pages (8KB units of disk space) available to assign in the filegroup. This suggests that either the database files are not being allowed to grow or that there is insufficient physical space on the disk. This condition will prevent clients from writing any changes to the database and could lead to database corruption.

Avoid using the Simple database recovery model. 3.2

One or more of your databases is using the Simple recovery model.

RECOMMENDATION

One or more databases have not had a full backup in the last seven days. Should you need to restore a database, restoring multiple incremental backups over an old full backup will increase the total recovery time.

SUGGESTED ACTIONS

Complete a full backup of any databases that have not had a full backup in the last seven days.

Ideally you should run full backups on a daily basis. If this is not feasible, schedule full backups to run on these databases on at least a weekly basis.

You can use the Maintenance Plan wizard to create a workflow of the tasks required to make sure that your database is well managed, including on to ensure that it is regularly backed up. You can find detailed steps for creating a maintenance plan for scheduling backups in *Use the Maintenance Plan Wizard* at <http://technet.microsoft.com/en-us/library/ms191002.aspx#SSMSProcedure>.

To monitor database backup scheduling, you can use Policy-Based Management. This allows you monitor best practices for the SQL Server Database Engine and provides the Outdated Backup best practice rule to identify databases that have not been backed up in a defined period.

PRIORITIZATION GUIDANCE

Impact: High Impact	Probability: Moderate	Effort: Moderate Effort
---------------------	-----------------------	-------------------------

AFFECTED OBJECTS Last Assessed Date

The following databases have not had a full backup in the last seven days:

CDMRRSTDVC0010.CDM.LAB\VIM_SQLEXP VIM_VCDB	Wed Apr 20 2016
DB04.CONTOSO.COM OperationsManagerDW	Wed Apr 20 2016
DB04.CONTOSO.COM ReportServer	Wed Apr 20 2016
DB04.CONTOSO.COM ReportServerTempDB	Wed Apr 20 2016
DB03.CONTOSO.COM OperationsManager	Wed Apr 20 2016

[View all affected objects](#)

CONTEXT

Nýtt stjórnborð

Microsoft Azure

Visitors App

+ New

Bash

```
policy      : Manage resource policies.
postgres    : Commands to manage Azure Post
provider    : Manage resource providers.
redis       : Access to a secure, dedicated
resource    : Manage Azure resources.
role        : Use role assignments to manag
sf          : Manage and administer a Servi
snapshot    : Manage point-in-time copies o
           snapshots.
sql         : Manage Azure SQL Databases an
storage     : Durable, highly available, an
tag         : Manage resource tags.
vm          : Provision Linux or Windows vi
vmss        : Create highly available, auto
webapp      : Manage web apps.
modernclouddemo2@Azure:~/clouddrive$
modernclouddemo2@Azure:~/clouddrive$ az vm li
```

All resources (47)

- visitorsappdiag342
Storage account
- VisitorsCrmSvcFx
Web App
- visitorsdb
SQL database
- VisitorsWeb
Web App
- visitorswebf02e
Web App
- visitorswebplan
App Service plan
- Web
Application Insights
- worker-01
Virtual machine
- worker-01-ip
Public IP address
- worker-01-nsg
Network security group
- worker-01888
Network interface
- worker-02
Virtual machine

Favorites Resources Notifications Cloud Shell

Bash

```
Requesting a Cloud Shell.. Succeeded.
Connecting terminal...

Welcome to Cloud Shell (Preview)

"az account list" for subscriptions
"help" to learn more

modernclouddemo1@Azure:~/clouddrive$
```

Done

q w e r t y u i o p

a s d f g h j k l

↑ z x c v b n m ↵

123 😊 🎤 space return

TRAUST

HVAÐ ÞARF TIL?

<https://www.microsoft.com/trust>

Samningur

Vottun

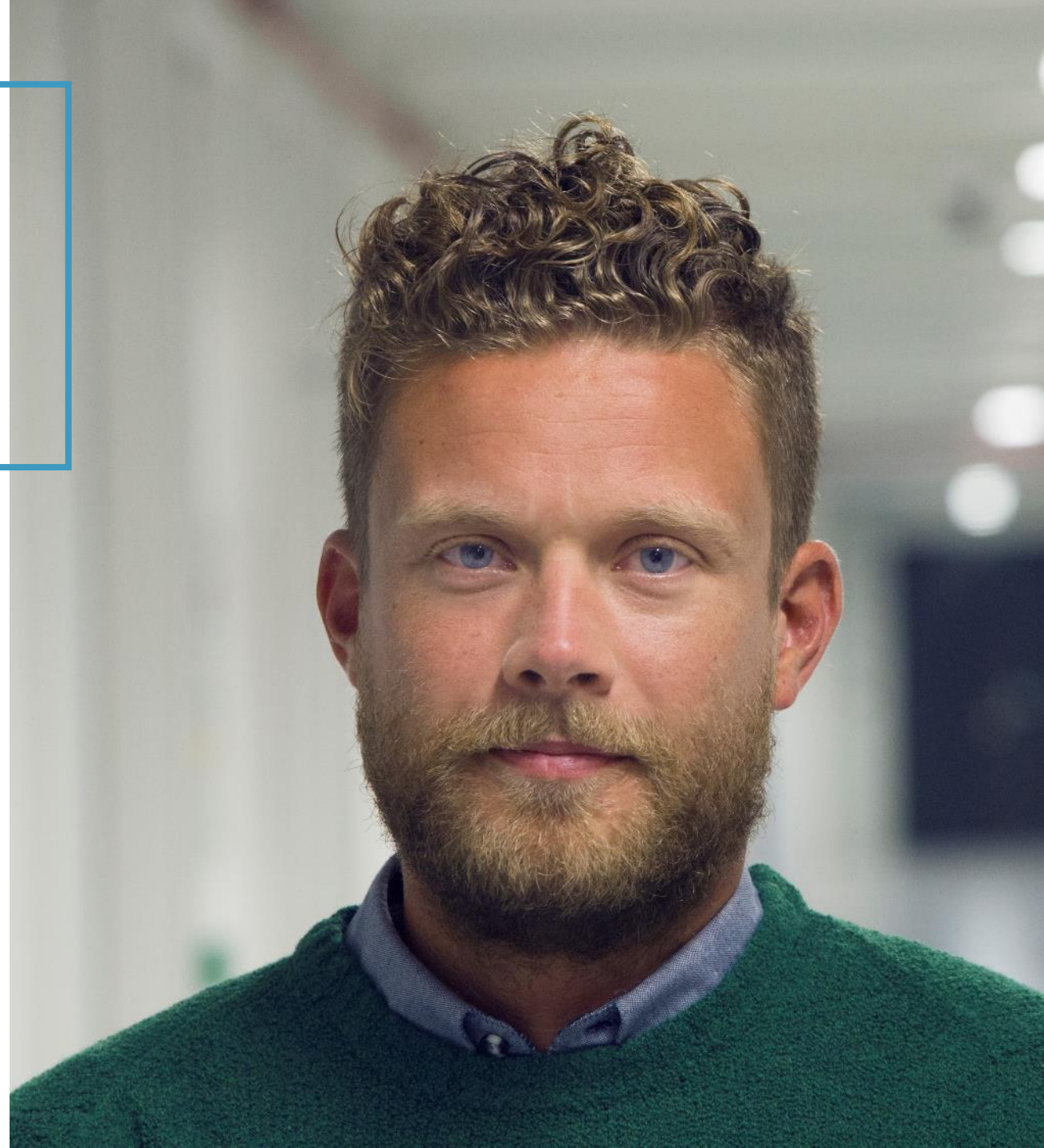
Eftirlit 3ja aðila

Gott orðspor

Margir viðskiptavinir

Góðir samstarfsaðilar

Grimmar refsingar



Takk fyrir

Jóhann Áki / jab@ok.is

