



Hvað eiga Kerfisleiga og tölvuský sameiginlegt?

Microsoft Iceland

Gunnar Karl Níelsson

Dynamics Lead

gunnarn@microsoft.com



Yfirlit

- Kerfisleiga – Tölvuský
- „Hlutverka-drifið“ viðmót – RTC
- Krafa um einfaldleika
- Fjárhagskerfi hvar sem er?

Kerfisleiga og tölvuský

Kerfisleiga

?

Tölvuský



Kerfisleiga – Tölvuský

Developed/delivered entirely by MS

Online Marketing services

Microsoft **adCenter**
Microsoft Dynamics CRM Online

Developed/delivered jointly in
partnership with 3rd parties

Marketplace services



Payment services



Developed/delivered by 3rd parties
Using the “Cloud”

Potential Future Services

ecommerce



Microsoft Dynamics



On Premise



Partner Hosted



Microsoft Dynamics NAV 2009 R2

Kerfisleiga – Tölvuský

Developed/delivered entirely by MS

Online Marketing services

Microsoft **adCenter**
Microsoft Dynamics CRM Online

Developed/delivered jointly in
partnership with 3rd parties

Marketplace services



Payment services



Developed/delivered by 3rd parties
Using the “Cloud”

Potential Future Services

ecommerce



On Premise



Partner Hosted

	NEMO Analyzer Analytic tool
	iNEMO for iPhone
	NEMO NAV Dynamics NAV
	NEMO Cubes BI4 Dynamics
	NEMO Reports SSRS Reporting System
	NEMO Pactum Contract System



Financial management



Supply chain management



Manufacturing



Business intelligence



Project management



Human resource management

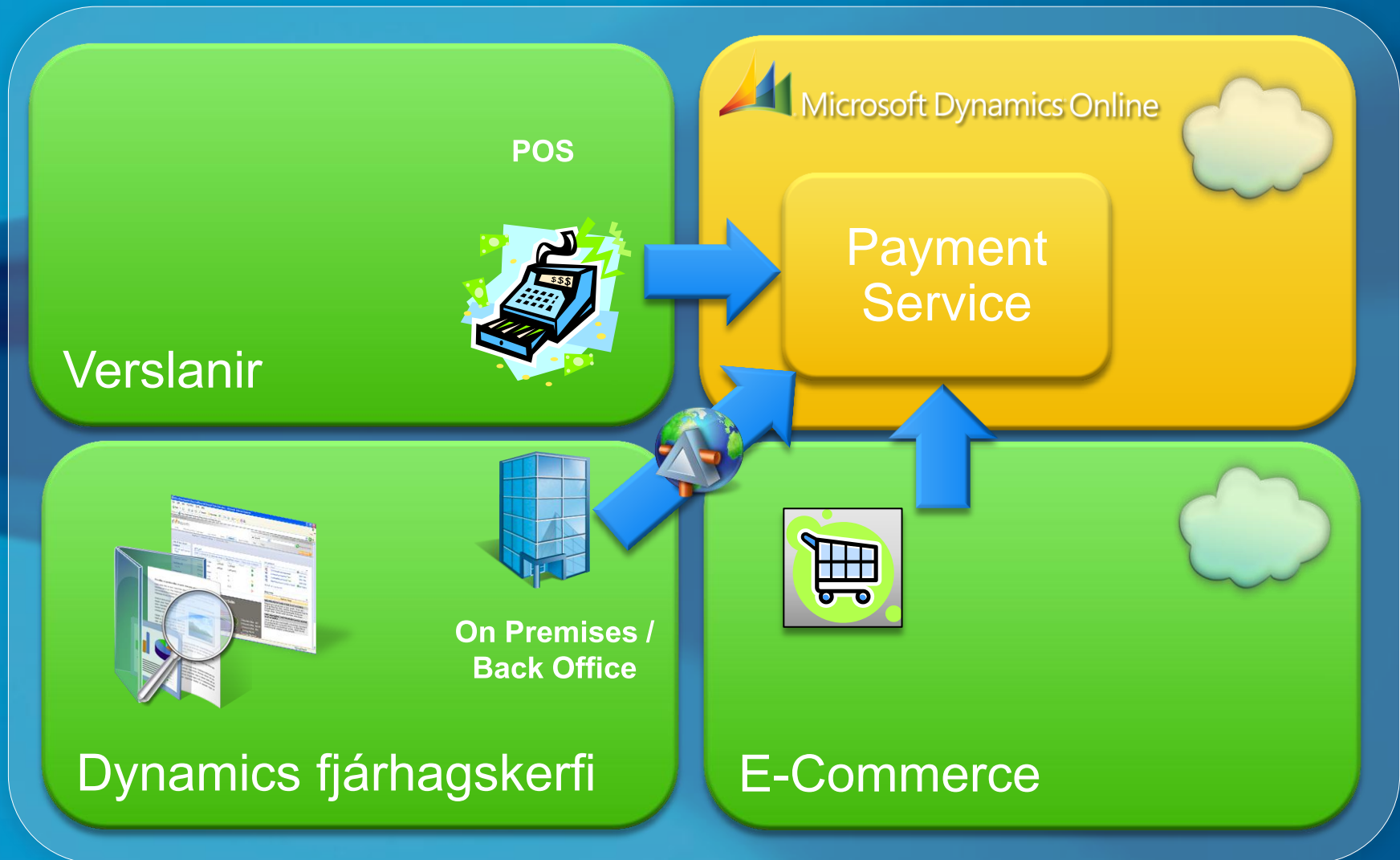


Sales and Marketing



Service management

Greiddslumiðlun



NAV 2009 R2 – 15. des 2010



CRM tengill Microsoft Dynamics CRM



Greiðslugátt fyrir Microsoft Dynamics NAV



Role Tailored Client aðgangur fyrir "Remote & Roaming sers"



Application Virtualization of NAV (App-V)



Windows 7 "Light-up"



Business Visualizations

Microsoft

Krafa um einfaldleika



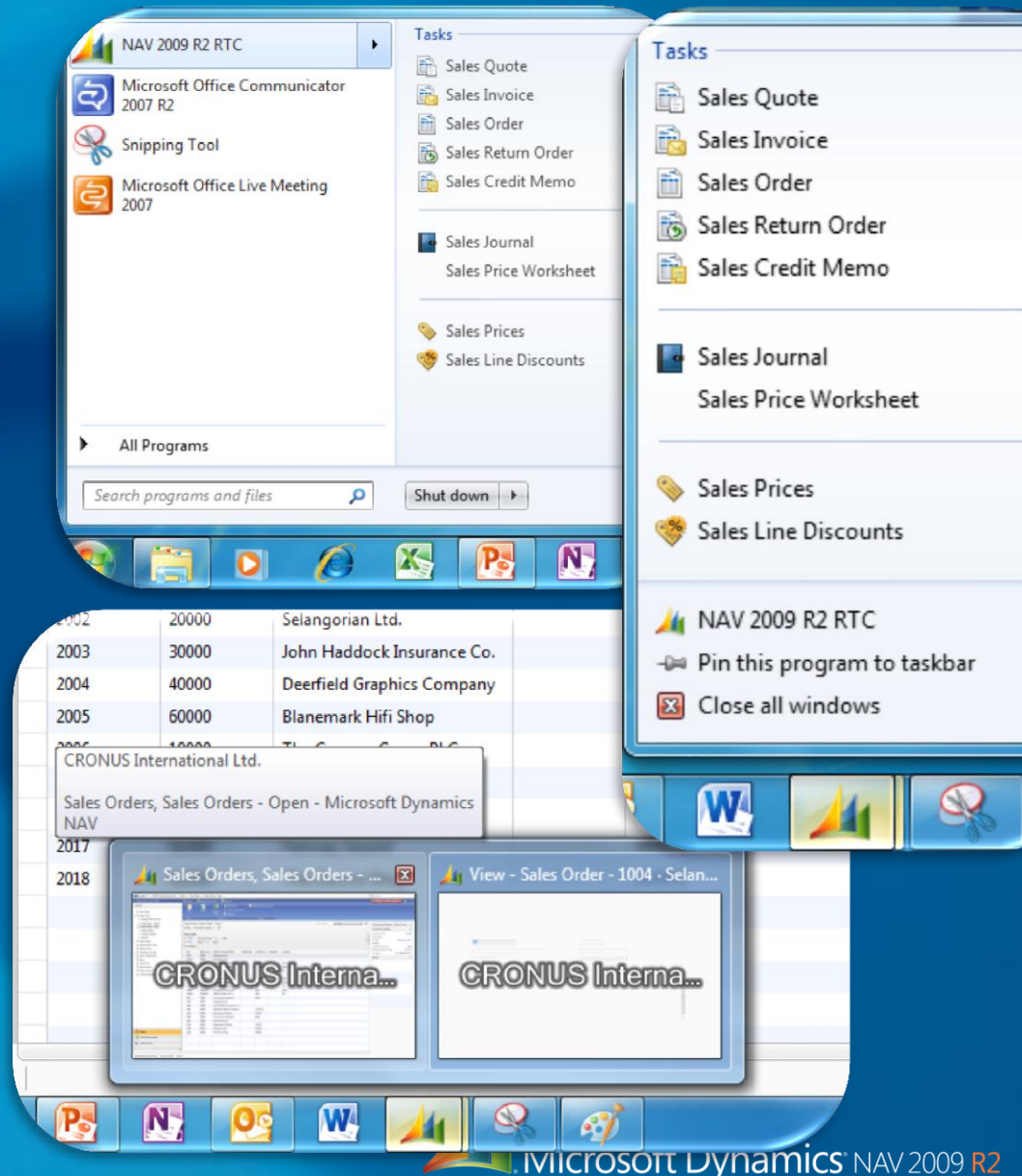
Microsoft Dynamics ERP

- „Ég vil bara sjá það sem ég þarf að nota“
- „Ég vil sama viðmót sem ég þekki“
- „Ég vill tengjast CRM núna!“
- „Fjárhagskerfið þarf að falla að ferlunum okkar“
-

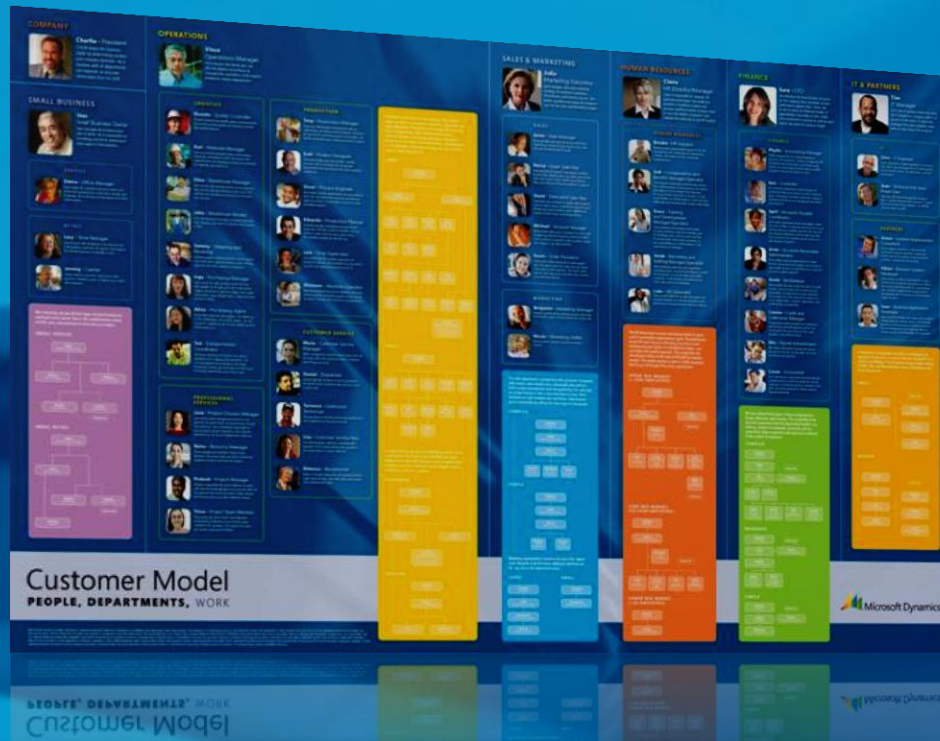
Fjárhagskerfi hluti af Windows 7

Windows 7 features

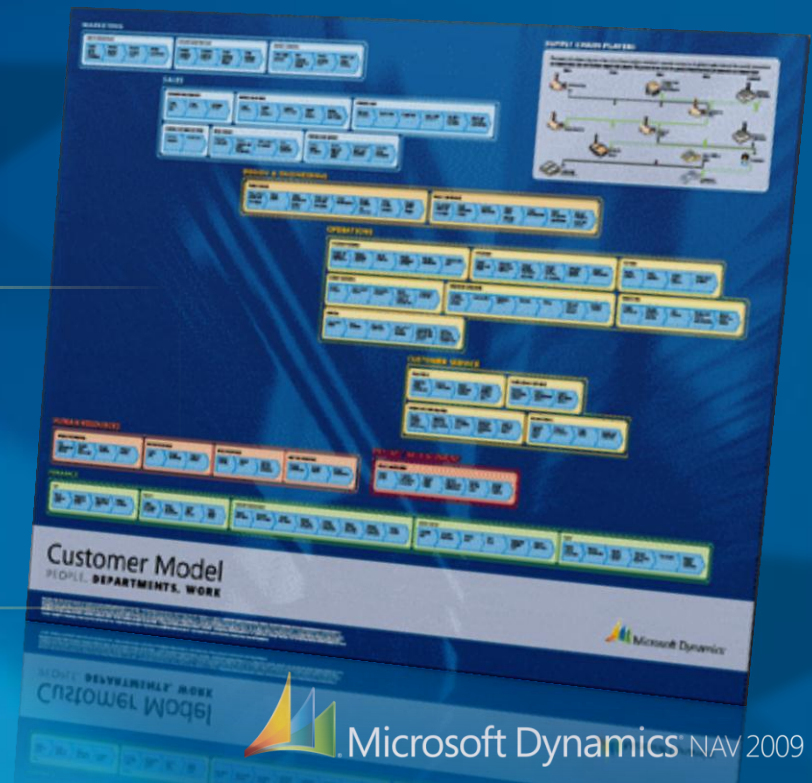
- Start & Task bar
 - Pinning favorites
 - Jump Lists
- Information by icons (thumbnails)
 - Icons shown
 - Static & dynamic information



Fólk og hlutverk í öndvegi



- The Persona Model
 - Maps to 61 user profiles
 - How they work
 - Within their departments



- The Work Model
 - 33 main processes
 - 155 sub-processes
 - Tasks and steps



Hlutverka-drifið notendaviðmót

[illegible]

Microsoft®

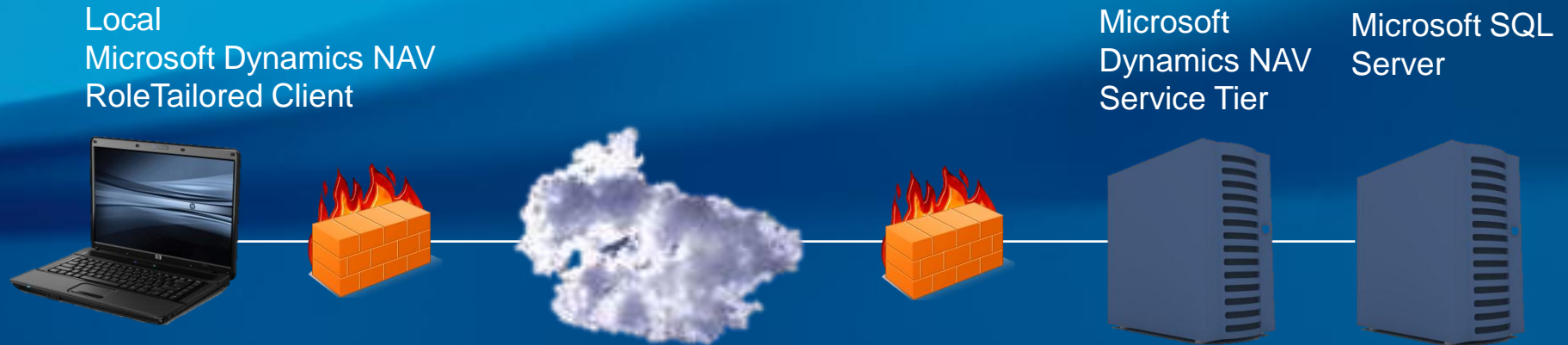
Fjárhagskerfi hvar sem er?

UI & Application



Microsoft Dynamics® ERP

Fjárhagskerfi hvar sem er

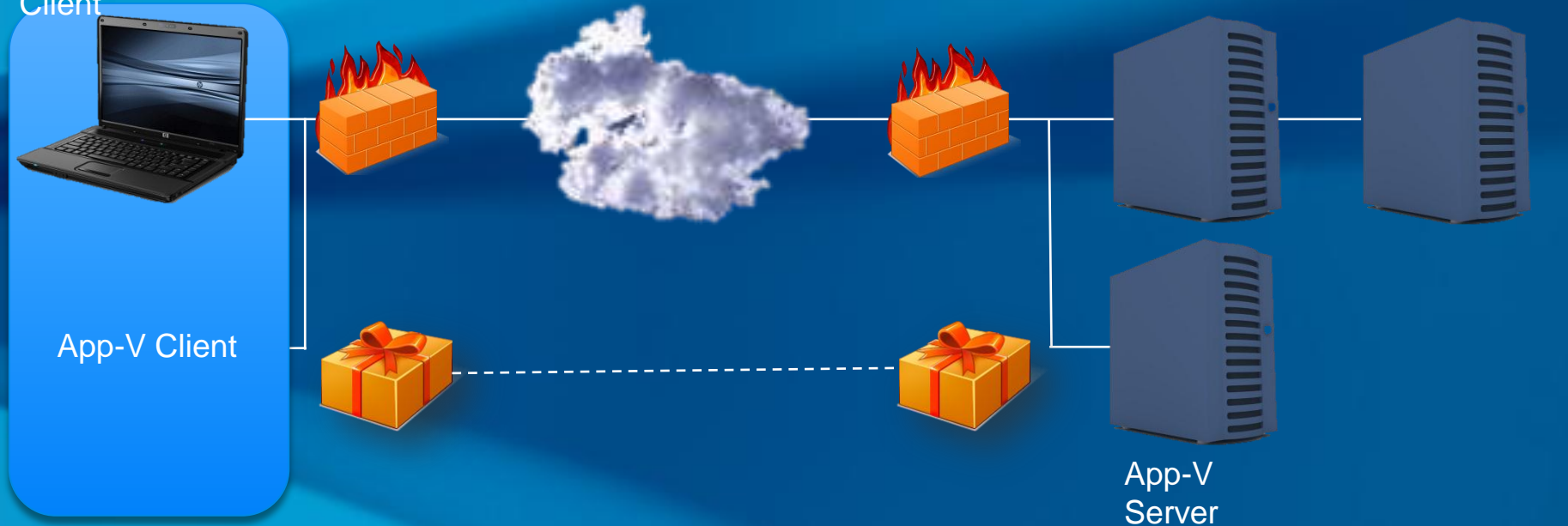


Benefits of using the local Microsoft Dynamics NAV client

- Integration to local applications vs. integration on server
- Rich local client experience vs. remote desktop
- No need for additional infrastructure for example a Citrix Server

Application Virtualization of Microsoft Dynamics NAV

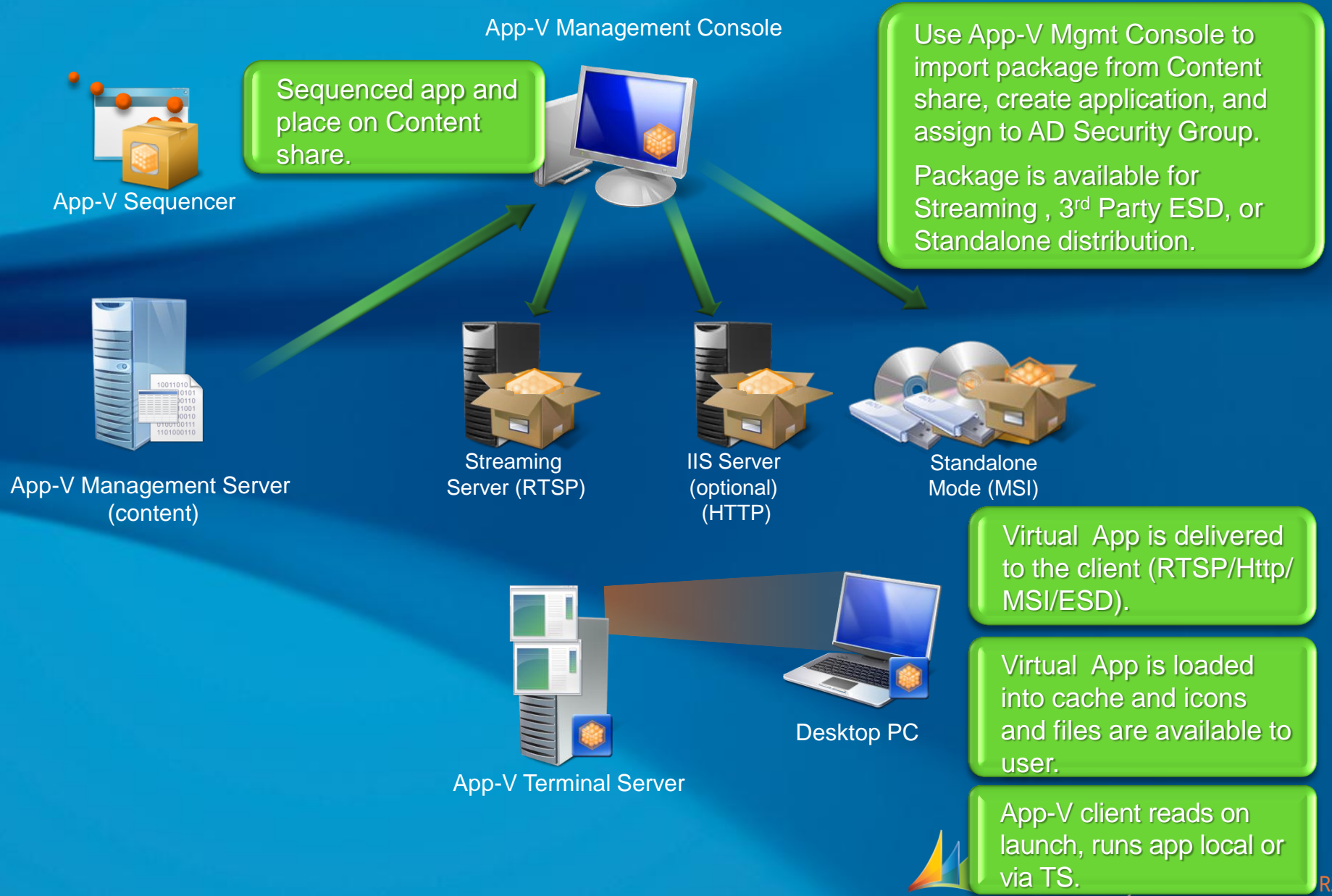
Streamed
Microsoft Dynamics
NAV RoleTailored
Client



Benefits of streaming the Microsoft Dynamics NAV client

- No Microsoft Dynamics NAV 2009 client needs to be installed locally
- Central management of Microsoft Dynamics NAV client installations is possible

App-V Infrastructure – How It Works



Thank you



Gunnar Karl Nielsson

Dynamics Lead – Microsoft Iceland
gunnarn@microsoft.com

Microsoft[®]

© 2010 Microsoft Corporation. All rights reserved. Microsoft, Microsoft Dynamics, the Microsoft Dynamics logo, and [list other trademarks] are trademarks of the Microsoft group of companies. The information herein is for informational purposes only and represents the current view of Microsoft Corporation as of the date of this presentation. Because Microsoft must respond to changing market conditions, it should not be interpreted to be a commitment on the part of Microsoft, and Microsoft cannot guarantee the accuracy of any information provided after the date of this presentation. MICROSOFT MAKES NO WARRANTIES, EXPRESS, IMPLIED OR STATUTORY, AS TO THE INFORMATION IN THIS PRESENTATION.