

Kimball hugmyndafræði

Uppbygging vöruhúsa



Grétar Árnason

Viðskiptagreind Opinna kerfa

gretar@ok.is



Vöruhús gagna

- Gagnagrunnur sem geymir gögn t.d fyrir skýrslugerð og greiningu
- Gögn eru flutt úr upprunnalegu kerfi yfir í vöruhús
- Vöruhús geta viðhaldið sögunni, þó svo upprunnaleg kerfi gera það ekki.
- Einn sannleikur



Ralph Kimball

- Fæddur 1944
- Ph.D. '73 Stanford University
- Forsagan
 - 1973 :Xerox Palo Alto Research Center
 - 1980: Metaphor Computer Systems
 - 1986: Red Brick Systems
 - Informix (IBM)
 - 1992 The Kimball Group



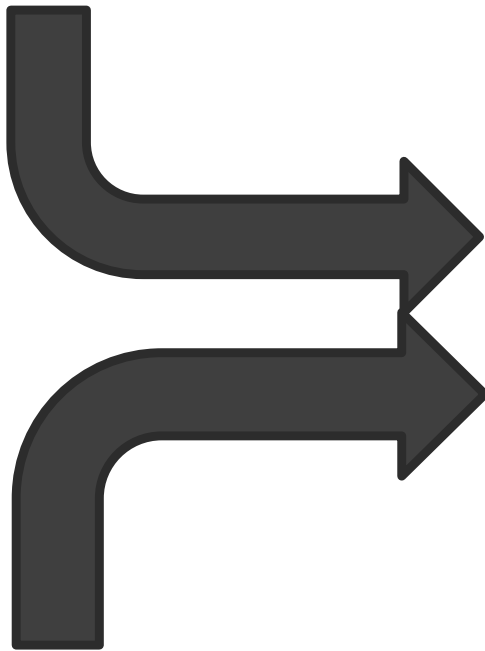
Kimball hugmyndafræði

- Dimensional Modeling / Data marts
- Dimensions
 - Conformed dimension
 - SCD Type(0-6)
 - Junk dimension
 - Mini dimension
 - Role-playing dimension
- Fact
 - Transactional Fact
 - Periodic snapshot
 - Accumulating snapshot
- Star schema/Snowflake schema



Dimensional Modeling

Þarfagreining



Dimensional Model:

Business Process

Grain

Dimensions

Facts

Aðgengi að gögnum

Dimensional Modeling

Four step process

1. Identify the Business Process

- Source of „measurements“

2. Identify the Grain

- What does 1 row in fact table represent/mean?

3. Identify the Dimensions

- Descriptive context, true to the grain

4. Identify the Fact

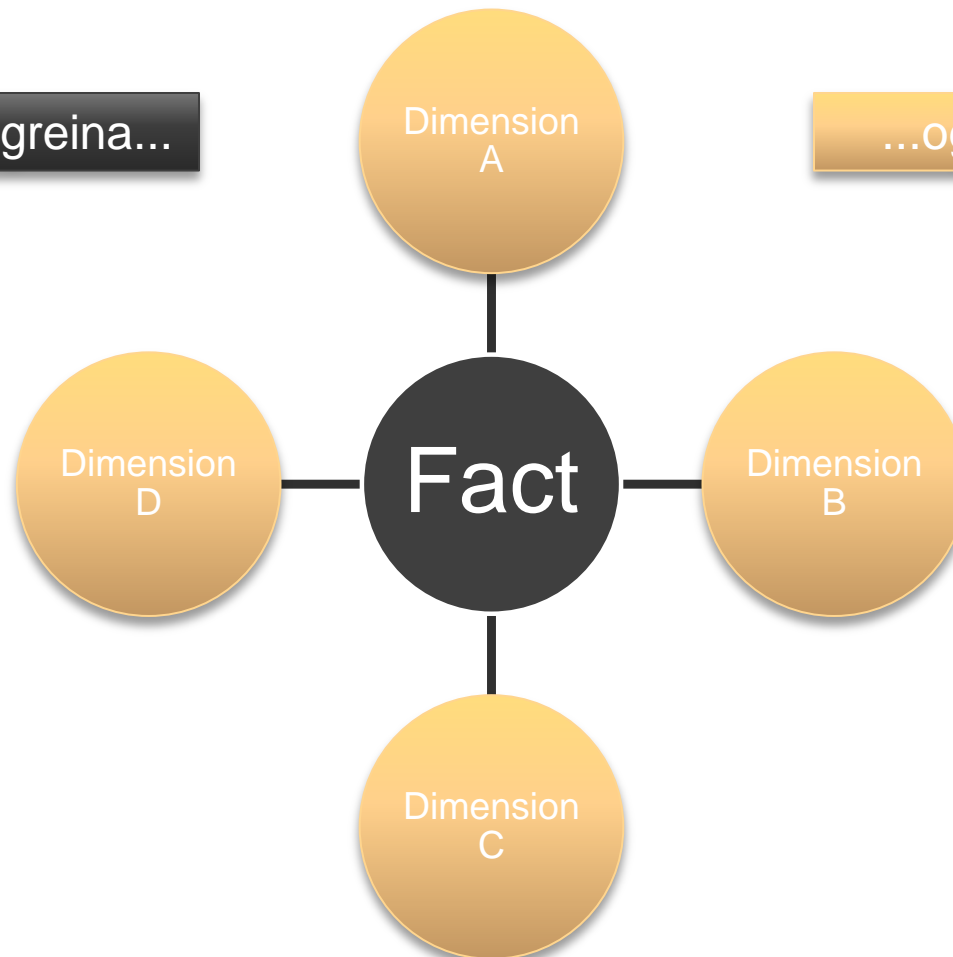
- Numeric additive measurements, true to the grain



Dimensional Model - StarSchema

Hvað á að greina...

...og eftir hverju



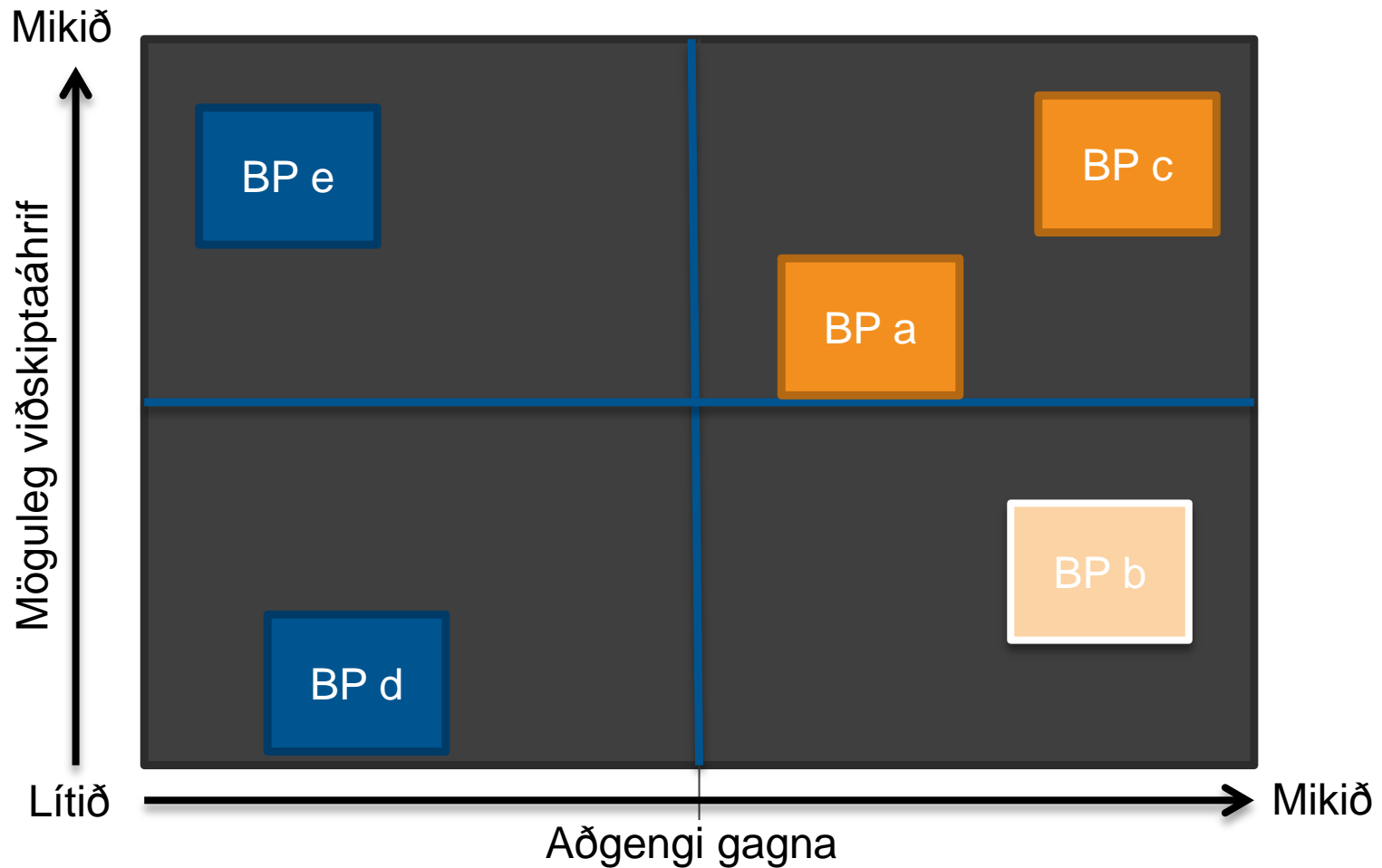
Dæmi: Starfsmaður

T_Employee

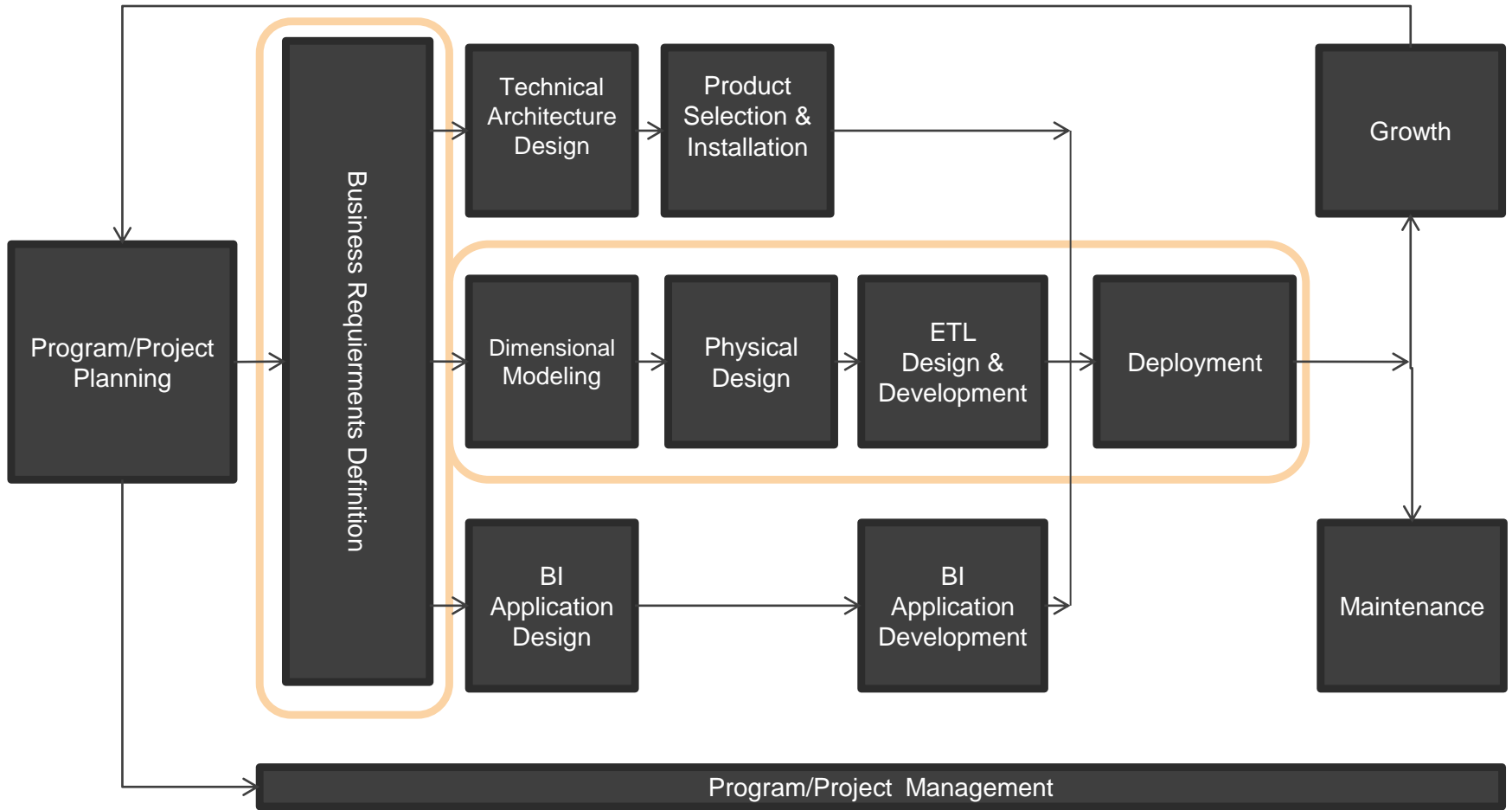
T_PhoneNumber

T_Address

Forgangsráða næstu skrefum

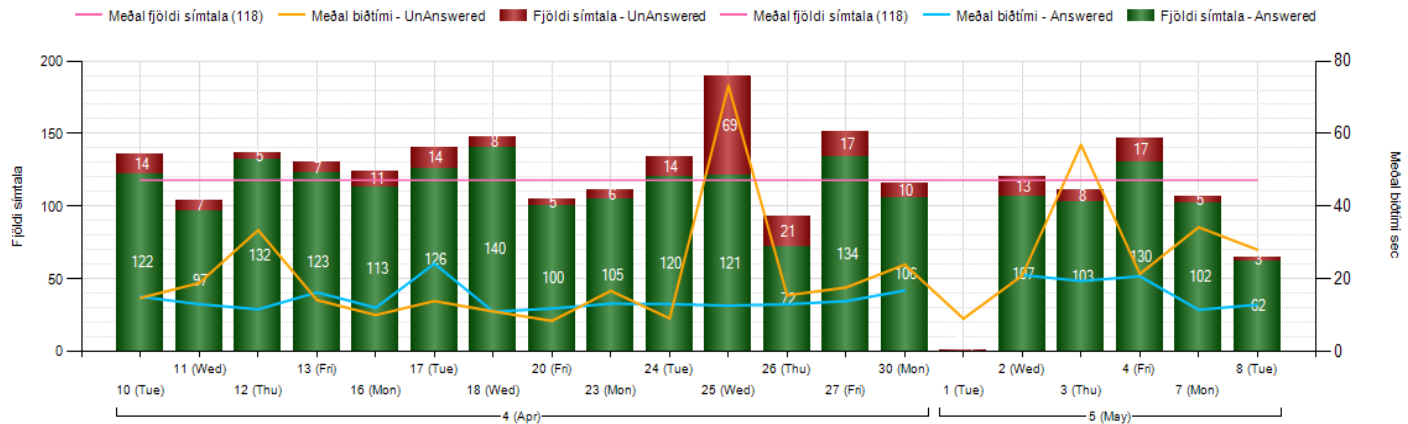


Kimball Lifecycle



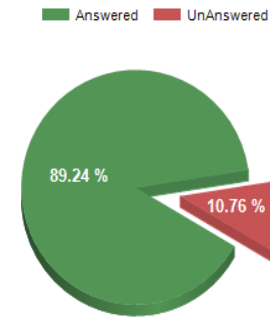
Skýrslur

Fjöldi símtala á tímabili frá: 08.04.2012 til: 08.05.2012



Dagsetning	Klst	Tími	Answered			UnAnswered			Total Fjöldi
			Fjöldi	Meðallengd	Meðal biðtími	Fjöldi	Meðallengd	Meðal biðtími	
2012/04/10			122	33	15	14	0	15	136
2012/04/11			97	47	13	7	0	19	104
2012/04/12			132	48	12	5	0	33	137
2012/04/13			123	25	16	7	0	14	130
2012/04/16			113	42	12	11	0	10	124
2012/04/17			126	62	24	14	0	14	140
2012/04/18			140	42	11	8	0	11	148
2012/04/20			100	40	12	5	0	8	105
2012/04/23			105	52	13	6	0	17	111
2012/04/24			120	47	13	14	0	9	134
2012/04/25			121	26	13	69	0	73	190

Svarhlutfall fyrir tímabilið



Stjórnendasýn



Áhugaverðar upplýsingar

• Bækur

- Kimball, Ralph; Margy Ross (2010). *The Kimball Group Reader*. Wiley. [ISBN 978-0-470-56310-6](#).
- Kimball, Ralph; Margy Ross, Warren Thornthwaite, Joy Mundy, Bob Becker (2008). *The Data Warehouse Lifecycle Toolkit* (2nd ed.). Wiley. [ISBN 978-0-470-14977-5](#).
- Kimball, Ralph; Joe Caserta (2004). *The Data Warehouse ETL Toolkit*. Wiley. [ISBN 0-7645-6757-8](#).
- Kimball, Ralph; Margy Ross (2002). *The Data Warehouse Toolkit: The Complete Guide to Dimensional Modeling* (2nd ed.). Wiley. [ISBN 0-471-20024-7](#).
- Kimball, Ralph; Richard Merz (2000). *The Data Webhouse Toolkit: Building the Web-Enabled Data Warehouse*. Wiley. [ISBN 0-471-37680-9](#).
- Kimball, Ralph; et al. (1998). *The Data Warehouse Lifecycle Toolkit*. Wiley. [ISBN 0-471-25547-5](#).
- Kimball, Ralph (1996). *The Data Warehouse Toolkit*. Wiley. [ISBN 978-0-471-15337-5](#).

• Linkar

- [Kimball University: The 10 Essential Rules of Dimensional Modeling](#)
- [The Kimball group](#)
- [Viðskiptagreind Opinna kerfa](#)



Spurningar

