The background is a complex, abstract digital illustration. It features a dense network of thin, light-colored lines that resemble circuit traces or data paths. These lines are punctuated by numerous small, semi-transparent circular nodes of varying sizes and colors, including shades of blue, grey, and white. The overall composition is layered and dynamic, with some elements appearing to flow or radiate from the left side towards the right. The color palette is primarily monochromatic, using various tones of beige, tan, and light brown, which gives it a warm, technical feel. The text is positioned in the upper right quadrant, set against a clear, light-colored area of the background.

Meðvituð og ábyrg samskipti
eru undirstaða
vinnustaðarmenningar



Culture is
communication

Communication is
culture

Edward T.
Hall - 1949

A man with dark hair, wearing a light blue t-shirt and grey pants, is sitting in a meditative pose (Padmasana) in a lush green field. He is looking towards the right, where the sun is rising over a line of trees, creating a bright, hazy atmosphere. The sky is blue with scattered white clouds. A wooden-textured rectangular box is overlaid on the image, containing the text "Djúpöndun".

Djúpöndun

Grundvöllur



Ábyrgð



Skrifleg samskipti



Vinnuumhverfi



Grundvöllur



Ábyrgð

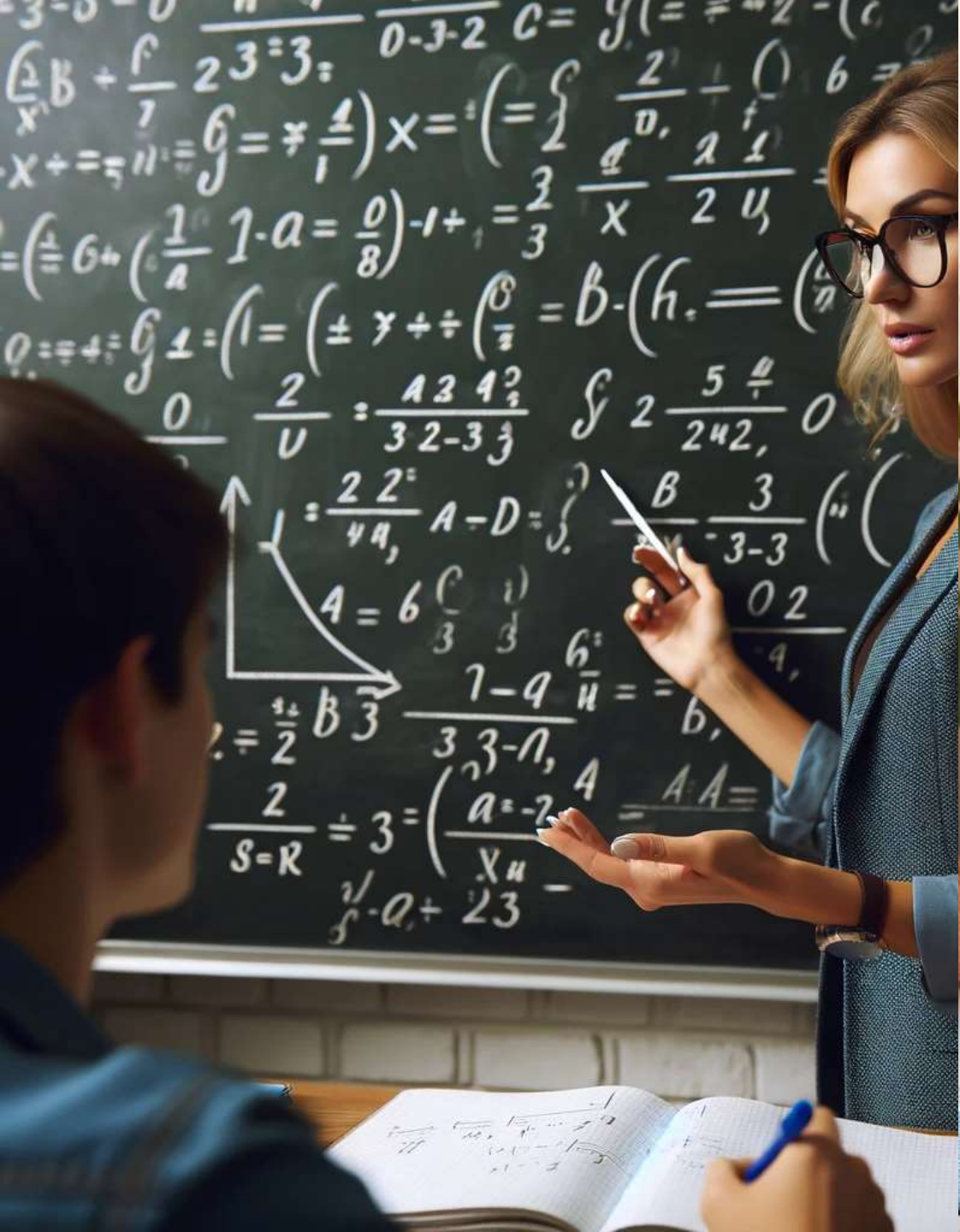


Skrifleg samskipti



Vinnuumhverfi





BACKLOG

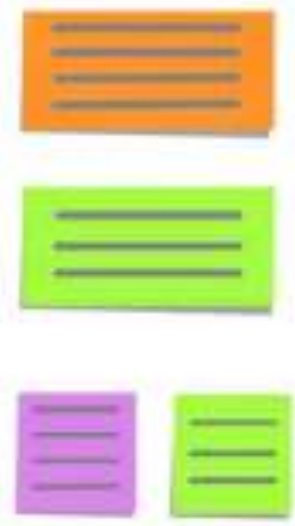
STORIES

TO DO

IN
PROGRESS

TO VERIFY

DONE



BACKLOG

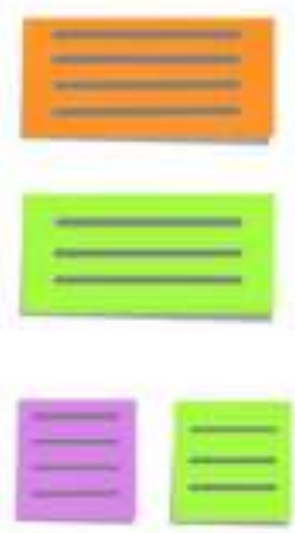
STORIES

TO DO

IN
PROGRESS

TO VERIFY

DONE



zzz

zzz

zzz

!!!



BACKLOG

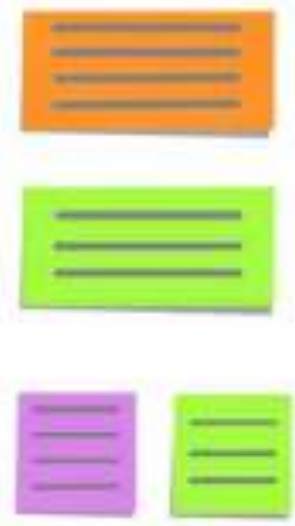
STORIES

TO DO

IN
PROGRESS

TO VERIFY

DONE



zzz

zzz

!!!

zzz



BACKLOG

STORIES

TO DO

IN
PROGRESS

TO VERIFY

DONE



BACKLOG

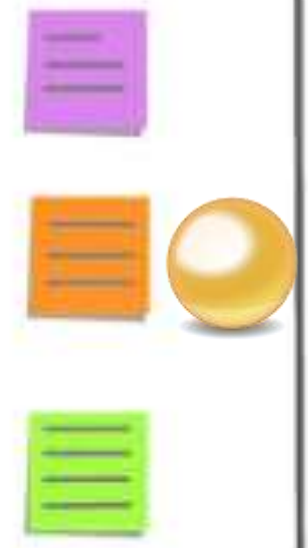
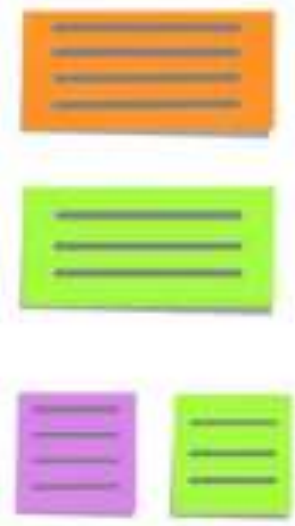
STORIES

TO DO

IN
PROGRESS

TO VERIFY

DONE



BACKLOG

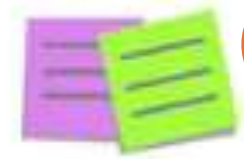
STORIES

TO DO

IN
PROGRESS

TO VERIFY

DONE





Grundvöllur

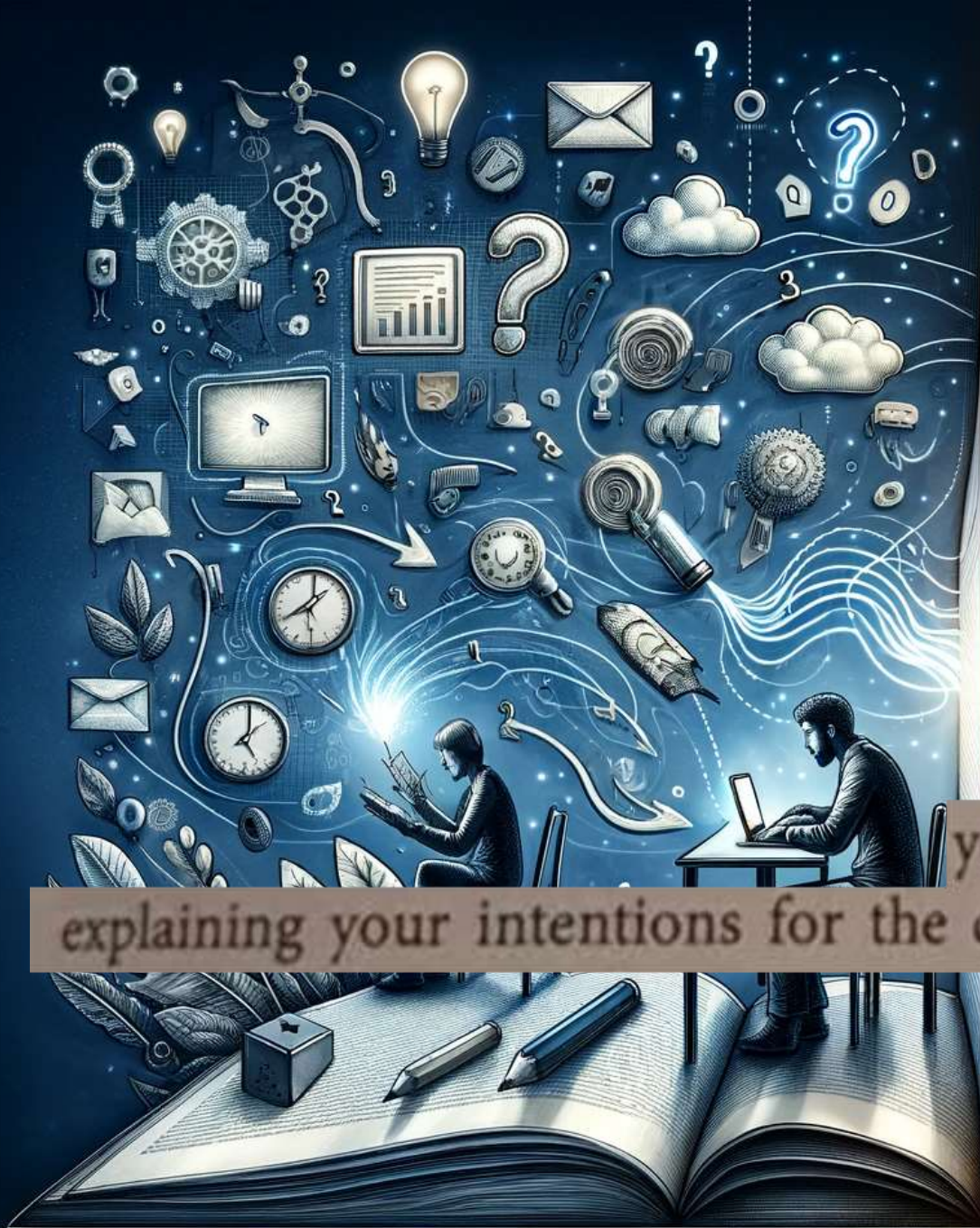


Skrifleg samskipti

Ábyrgð



Vinnuumhverfi



you are not just instructing a computer, you are explaining your intentions for the computer to other people. Tidy First? – Kent Beck



Sigurður (Junior Engineer): Sendir tölvupóst: "Gætirðu sagt mér hvar ég finn upplýsingar um X?"

Eva (Senior Engineer): Svarar með hlekk en sleppir venjulegri vinalegri kveðju.

Sigurður: Hugsar að hann hafi þeir

Mistúlkun: Eva var einfaldlega un

Björn (Teymismeðlimur): Sendir ítarlegt skjal á Slack og biður um endurgjöf á tillögu.

Helga (Teymisstjóri): Svarar með "thumbsup" emoji.

Björn: Fer í uppnám, túlkar stutta svar

Anna (Hönnuður): Fær endurgjöf í tölvupósti: "Þetta þarf meiri vinnu."

Anna: Eyðir helginni í áhyggjum, hugsar að hún sé á leiðinni að missa vinnuframfarir.

Mistúlkun: Stjórnandinn ætlaði að koma því til skila að hönnunin þyrfti breytingar, ekki algjöra endurgerð.

me after being left on read for more than a minute



Grundvöllur



Skrifleg samskipti

Ábyrgð



Vinnuumhverfi

Við mætum öðru fólki
þar sem þau eru.



Ábyrgð – ásetningur og áhrif



Grundvöllur



Skrifleg samskipti

Ábyrgð



Vinnuumhverfi

Öráreiti





Samkennd



Meðvirkni

